



Port of
LONG BEACH
THE PORT OF CHOICE



SECURING THE PORTS OF TOMORROW

PANEL PARTICIPANTS:

Commander Ariel Berrios – *Chief of Response, U.S. Coast Guard LA-LB*

Michael Goldschmidt – *Assistant Director of Security, Port of Long Beach*

Casey Hehr – *Director of Security, Port of Long Beach*

August 15, 2023

A NETWORKED APPROACH

SAN PEDRO BAY PORT COMPLEX

PARTNERSHIPS

ACROSS THE SPECTRUM



Port of
LONG BEACH
THE PORT OF CHOICE

PREVENTION

PREVENTING INCIDENTS BEFORE THEY HAPPEN



Port of
LONG BEACH
THE PORT OF CHOICE

FACILITATING COMMERCE

SUPPLY CHAIN RESILIENCE



PORT OF
LOS ANGELES
AND
LONG BEACH

INNOVATION

STAYING AHEAD OF THE THREAT



Part of
LONG BEACH
THE PORT OF CALIFORNIA

CHALLENGES AHEAD

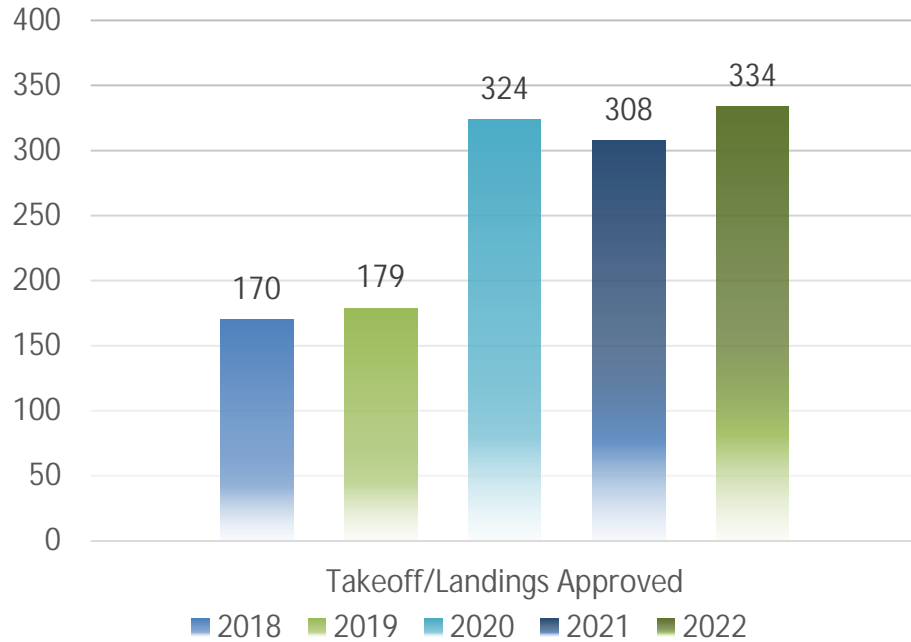
CYBERSECURITY – UNMANNED VEHICLES - AUTOMATION

CYBER THREATS

SEGMENTATION – RESILIENCE - COLLABORATION

UAVs

REGULATION - DETECTION – MITIGATION



U.S. Coast Guard Sector Los Angeles – Long Beach



Ø [Every Day in the Coast Guard - YouTube](#)



Sector Los Angeles-Long Beach



Overview

14 Field Commands: 4 FRCs (FORREST REDNOUR, ROBERT WARD, TERRELL HORNE, BENJAMIN BOTTOMS), 4 CPBs (NARWHAL, HALIBUT, BLACKTIP, BLACKFIN), 3 Small Boat Stations (LA-LB, Channel Islands, Morro Bay), ANT LA-LB, MSD Santa Barbara, VTS.

Workforce/Budget: 459 AD, 135 Reservists, 19 civilians and 756 Auxiliarists throughout the AOR; \$3.3 million annual budget

Operations (CY22)

Search and Rescue:

Ø 231 cases; 73 lives saved; 246 lives assisted and \$5.6M in property saved/assisted.

Counter Drug/AMIO:

Ø 181 total CD/AMIO events (78 human smuggling & 3 narcotics cases); 412 migrants interdicted; 380 lbs of marijuana; 256 lbs cocaine.

General Statistics:

- Ø 6,162 Container Inspections
- Ø 293 Facility Inspections
- Ø 135 Fishing Vessel Exams
- Ø 1,735 Vessel Inspection Activities
- Ø 135 Vessel Operational Controls
- Ø 534 Marine Casualty Investigations
- Ø 35 Violations/civil penalties/suspension & revocation cases
- Ø 266 Investigations/responses to reported pollution
- Ø 181 law enforcement/security operations (SVSB, MTSA, OGA/ReCoM, 4100, HIV)



45' RB-M



29' RB-S



47' MLB



FRC



87' Cutter

Overview

Execute CG missions along more than 350 miles of shoreline and out to 200 miles, from the northern boundary of Cambria, south along the coast to San Clemente, and inland to the Arizona and Nevada statelines.

• Port of Los Angeles (POLA):

- Ø Busiest U.S. container port complex.
- Ø 4,300 acres, 43 miles of waterfront, 270 berths and 88 gantry cranes.
- Ø Top 3 Imports: furniture, auto parts, apparel.
- Ø Top 3 Exports: pet/animal feed, paper/wastepaper, soy beans.

• Port of Long Beach (POLB):

- Ø 2nd busiest container port in the U.S.
- Ø 3,520 acres, 25 miles of waterfront, 80 berths and 72 post-Panamax cranes.
- Ø Top 3 Imports: crude oil, electronics, plastics.
- Ø Top 3 Exports: petroleum products, chemicals, wastepaper.

• Combined Port Complex:

- Ø Busiest container port complex in the Americas, 9th in the world.
- Ø Most vessel arrivals ~4,675 in CY22 for D11.
- Ø ~ 30% of US, and 75% of West Coast market share of containerized cargo.
- Ø Over \$500 billion in annual waterborne foreign trade.
- Ø The number of jobs supported by the port complex total 168,000 in LA-LB, 883,000 in the 5 county region, and 2.53 million nationwide.

• Port Hueneme: Dual use Commercial/Military:

- Ø Independent owned and operated business enterprise operated entirely on Port business generated funds; only Navy controlled harbor between San Diego and Puget Sound.
- Ø Top 3 Imports: bananas, autos, liquid bulk.
- Ø Top 3 Exports: autos, heavy equipment, fruit/vegetables
- Ø #9 in North America for auto import/export, accounts for 5% of all US auto volume.

• Diablo Canyon Nuclear Power Plant:

- Ø Northern San Luis Obispo County; generates electricity for over 2.2 million people. Scheduled to close in 2025.

• Offshore Oil:

- Ø 27 offshore platforms and 4 artificial oil islands.
- Ø SoCal petroleum refineries supply fuel needs of the entire American Southwest (Los Angeles, San Diego, Las Vegas and Phoenix).

Operating Environment

Sector LA-LB's environment has three distinct areas.

- (1) From Point Conception north: the coastline is sparsely populated and the maritime weather is treacherous.
- (2) From Point Conception south to Point Dume (northern end of Santa Monica Bay): the larger communities of Santa Barbara and Ventura/Oxnard are interspersed with undeveloped coastal areas. The Channel Islands and other environmentally sensitive sites are a major focus, as are 20 oil platforms offshore.
- (3) From Santa Monica Bay south to San Clemente: the coastline is much more densely populated. Small boat harbors, cities recreational boating, commercial vessels and the port complex of LA-LB influence the maritime environment. Catalina Island is a favorite leisure destination, and 7 more oil platforms operate offshore.

Marine Transportation System

The LA-LB COTP Zone consists of waterways, ports, and intermodal landside connections that include:

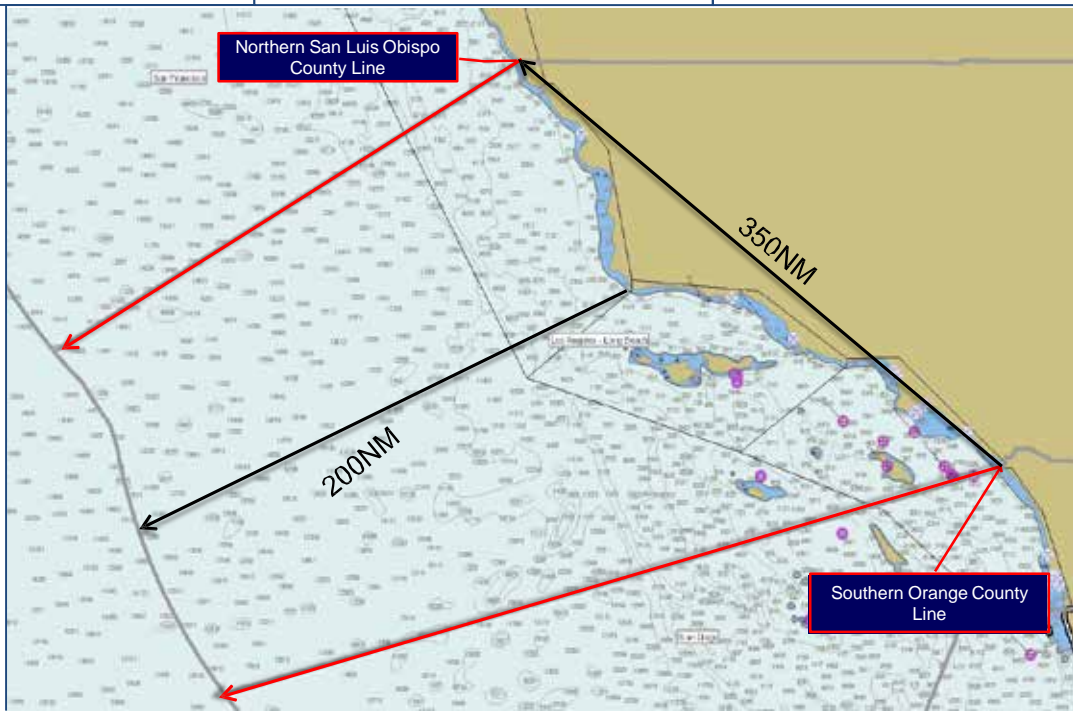
- 2 cruise ship terminals
- 13 ferry terminals
- 17 passenger ferries
- 27 offshore oil platforms & oil islands
- 59 miles of rail track
- 64 marine terminals
- 95 recreational marinas & 105 Yacht Clubs
- 880 commercial fishing vessels
- 200,000 personal water craft

Political Environment

27 Congressional Districts; our most active relationships are with members who have a port nexus including Rep Barragan (D), Rep Bass (D), Rep Lowenthal (D), and Rep Carbajal (D) whose District includes Santa Barbara. We also engage local mayors for various issues including those for Santa Barbara, Los Angeles and Long Beach.

Key Port Partners

Federal: USACE, CBP, HSI, FBI, NOAA, NPS, DEA, BSSE, NMIO.
State/Local: OSPR, CADFW, CAL OES, LAPP, LBP, LASD, OCSD.





Port of
LONG BEACH
THE PORT OF CHOICE



THANK YOU

