

---

---

# LBUSD/POLB Partnership

Jay Camerino, Ed.D.

Assistant Superintendent of Secondary Schools

August 15, 2023

---

---

OPENED 1885

ENROLLMENT

- 65,500 Students

STUDENT DIVERSITY

- 59.1% Hispanic
- 12.4% African American
- 12.1% White
- 6.7% Asian
- 5.5% Two or More Races
- 2.8% Filipino
- 1.1% Pacific Islander
  
- 15.1% English Language Learners
- 64.3% Socioeconomically Disadvantaged

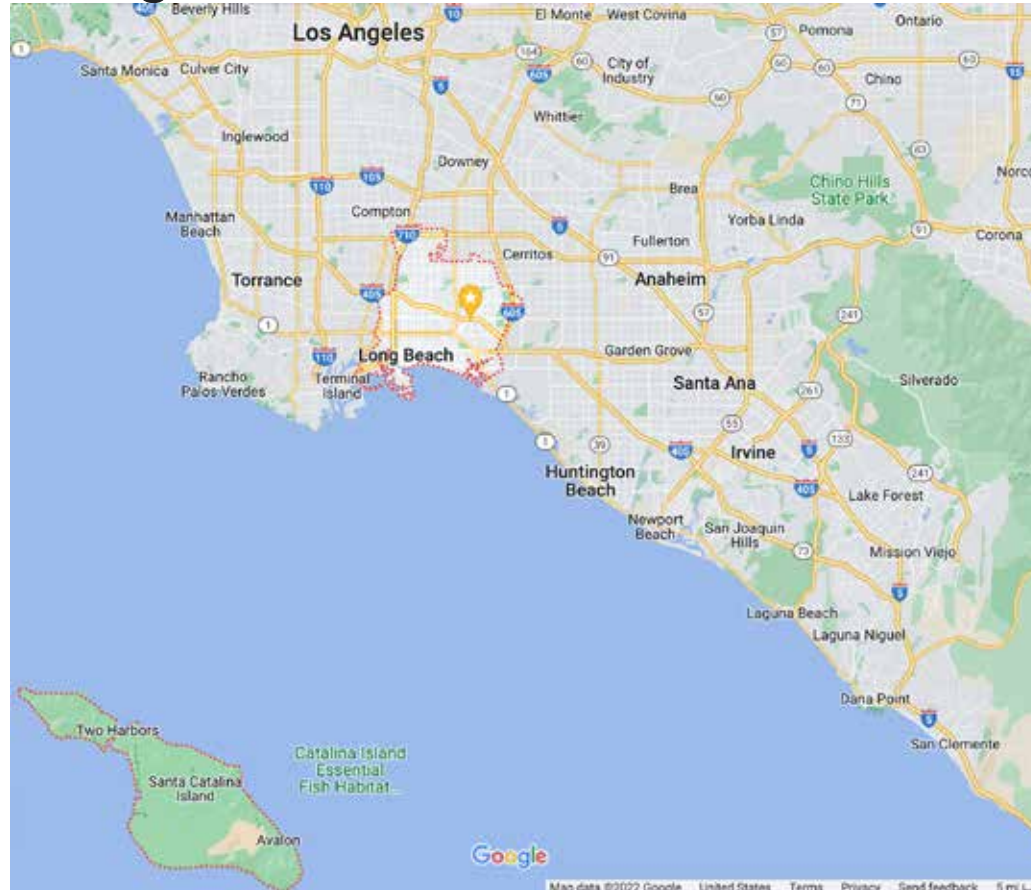
FACILITIES

- 84 schools in Long Beach, Lakewood, Signal Hill and Avalon (Catalina Island)

BUDGET

- \$1.2 billion operating budget for 2022-23

# Long Beach Unified School District



---

---

# Linked Learning Approach

---

---

# 15 Industry Sectors and Pathways



## California Industries

- **Agriculture and Natural Resources**
- **Arts, Media, and Entertainment**
- **Building and Construction Trades**
- **Business and Finance**
- Education, Child Development, and Family Services
- Energy, Environment, and Utilities
- **Engineering and Architecture**
- **Fashion and Interior Design**
- **Health Science and Medical Technology**
- **Hospitality, Tourism, and Recreation**
- **Information and Communication Technologies**
- Manufacturing and Product Development
- **Marketing, Sales, and Service**
- **Public Services**
- Transportation

# Pathways as a Strategy for Equity

- All students in pathways
- Standards for Silver and Gold Status
- Tool to ensure equitable experiences regardless of geography etc.



# Linked Learning Makes a Difference



**Increased graduation and decreased dropout rates**



**More credits earned, including A-G credits**



**Greater success skills, including communication, collaboration, and self-management**



**Strongest effects for students who entered high school with low achievement**



**Pathway quality matters**

# When we open, close, or transform pathways

- Student enrollment and interest
- Regional and Local Industry Impact
- Teacher credentials and available staff
- Facilities and equipment

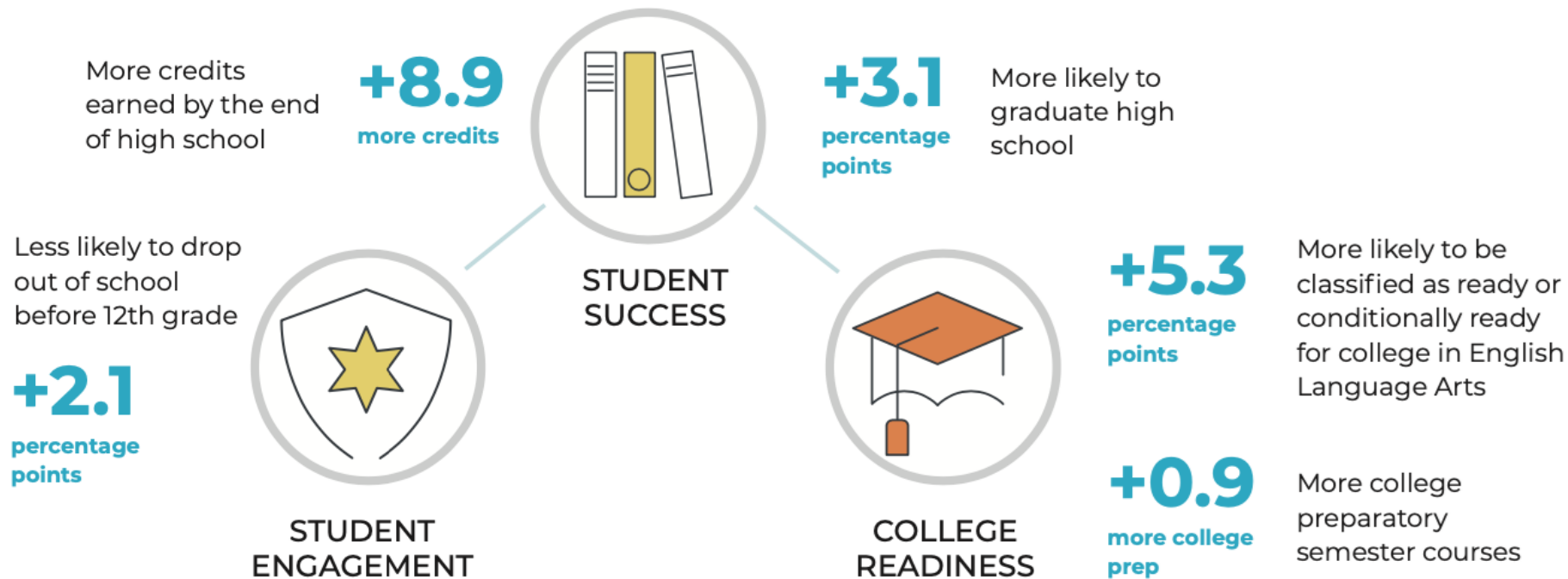


# A Linked Learning pathway is:

- A group of students that learn academic content through an industry lens.
- They have a shared sequence of core courses; math, English, science, social science, and CTE, taught by a cohort of teachers at each grade level.



# SRI International: Impact of Linked Learning



# What is Career Technical Education

A program of study that involves a multiyear sequence of courses that:

- integrates core academic knowledge
- technical and occupational knowledge
- provides students with a pathway to postsecondary education and careers.



# The Past

Two Directions: Voc Ed



# Today/Future

One Direction: CTE



# Benefits of CTE

- Transferable Learning
- Connecting with Community
- Collaboration



# Work Based Learning

- Women in Trade Event
- State of the Port
- Guest Speakers



# Internships & Scholarships

- Academy Specific Scholarships
- High School Student Internships
- Support creating Curriculum



# Mentoring Sessions

- Industry Partners providing feedback to students
- Mock Interviews, Resume Writing, Elevator Pitching
- Networking for Internships



# Teacher Externships and Certifications

- Port of Long Beach Teacher Externship
- Linked Learning Certifications
- Opportunities for teachers to learn & plan
- Opportunities for students to explore further
- Grade level collaboration
- Increase in student supports


INTEGRATED PROGRAM OF STUDY	WORK-BASED LEARNING	INTEGRATED STUDENT SUPPORTS
<p><i>Student-centered learning connected to postsecondary and industry expectations.</i></p>	<p><i>A continuum of meaningful experiences with work and real-world applications of learning.</i></p>	<p><i>Meeting the developmental needs of each young person to equip all for a successful transition to college and career.</i></p>
<p><b>A cohort structure</b> in which students participate in at least 1 CTE course and 1 core curriculum course as a group.</p> <p><b>An integrated program of study</b> includes academic and CTE/career-themed courses that qualify students for a range of postsecondary options, including admission to public universities. The program of study includes a CTE/career-themed sequence of at least three courses allows students to learn through lens of an industry or career.</p> <p><b>Interdisciplinary projects</b> at each grade level integrate core academic and CTE/career-themed curricula.</p> <p><b>Early college credit opportunities</b> are available to students through AP, IB, or dual-enrollment options.</p> <p><b>Pathway teams collect data</b> on college preparatory and CTE/career-themed course completion, postsecondary credits earned, and graduation.</p>	<p><b>The continuum of planned career experiences</b> for students enables them to gain awareness of a broad range of careers within the industry theme, explore specific careers of interest, and participate in work-based learning opportunities.</p> <p><b>Career awareness activities</b> motivate students to explore a broad range of career options that inform their decision-making.</p> <p><b>Career exploration</b> is driven by students' interest in specific career paths, rather than an overview of many.</p> <p><b>Career preparation</b> enables students to experience firsthand what it is like to have a specific career.</p> <p><b>Pathway teams collect</b> career awareness, exploration, and preparation data.</p>	<p><b>College and career preparation and support</b> helps students set goals and work towards attaining them. College admissions activities prepare and support students as they navigate the college admissions process. Job application activities prepare students to navigate career choices.</p> <p><b>Orientation activities</b>, offered annually, help students explore a broad range of career options that inform their decision-making.</p>





# Questions



 Port of  
**LONG BEACH**  
THE PORT OF CHOICE  
**ACE**  
Academy  
*at Jordan High School*

 Port of  
**LONG BEACH**  
THE PORT OF CHOICE  
**Academy**  
of Global Logistics  
*at Cabrillo High School*